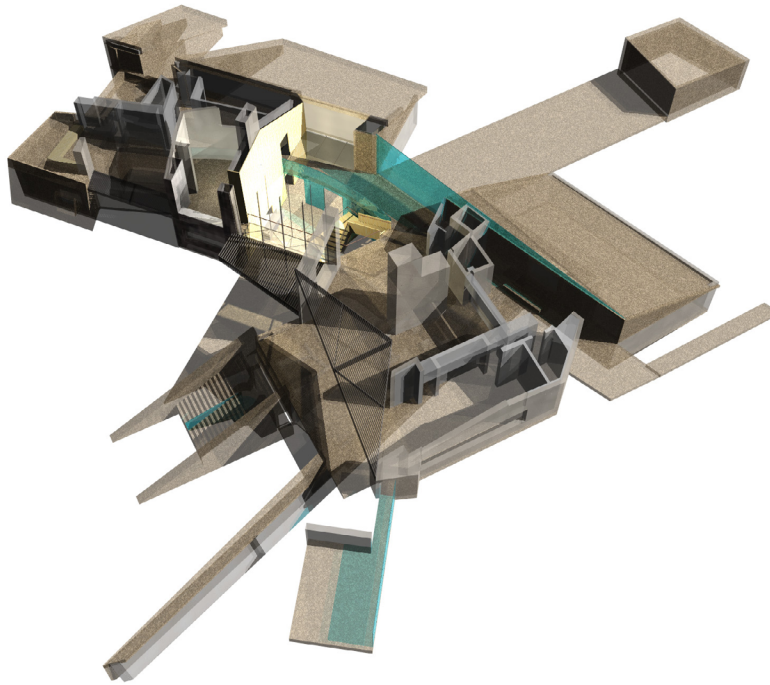


# How Architects Can Inspire Creativity in their Sub-consultants



## Course Description

Architects are formally trained and well-practiced in the creative process, while their subconsultants – typically engineers – tend to solve problems in a more linear fashion. This can be understandably frustrating to both architects and their subconsultants as both seek solutions, but with different approaches. This AIA course was developed to educate architects about the nature of the engineering mind, and to suggest how an atmosphere of creativity can be kindled with subconsultants.

## Learning Objectives

Attendees will be able to:

1. Articulate the meaning of “creativity” and “innovation” as it applies to the work of your sub-consultants.
2. Identify the 6 conditions in the architect’s control that can that foster innovative processes with sub-consultants.
3. Recognize the 9 barriers to innovation that can hinder the creative process.
4. Create and atmosphere conducive to creative behavior with project team members that are not trained in the creative arts.



### Bio

Gregory R. Kingsley, PhD, PE, is the president and CEO of KL&A Inc., Structural Engineers and Builders in Golden, Colorado, a firm of 65 that includes structural engineers, steel detailers, and construction managers. He enjoys working with design architects on innovative structures, especially in masonry and wood.

**AIA Provider Number:** E249

**Credit Designation:** LU|HSW



**KL&A, Inc.**

Structural Engineers and Builders